

We're Moving On!

Transitional Kindergarten and Kindergarten
Parent Information Night
Glankler Early Learning Center

December 7, 2016
Diane Dooley



Transitional Kindergarten (TK)

- If your child will be 5 years old between September 2, 2017 and December 2, 2016 he or she will be eligible to attend Transitional Kindergarten
- Special Education services are available for Transitional Kindergarten students whose IEP teams recommend them.
- All TK age Glankler students will have a Transition IEP to discuss TK special education recommendations.



What is Transitional Kindergarten?

- TK is taught by a credentialed teacher with both a multiple subject credential and an early childhood credential
- TK uses a combination of standards including the CA Dept. of Education's Preschool Learning Foundations and the Common Core Standards for Kindergarten
- TK has its own curriculum
- TK classes are located at various elementary schools throughout the district



Kindergarten

- If your child turns five on or before September 1, 2017 he or she is eligible to attend Kindergarten.
- Special Education services are available for students whose IEP teams recommend them.
- All Kindergarten Age students will have a Transition IEP to discuss special education recommendations.



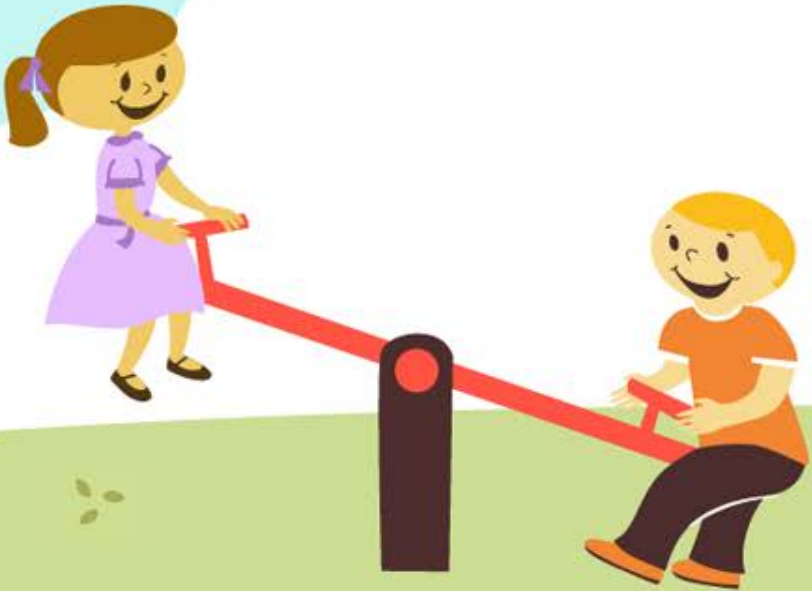
Does my child have to attend TK or Kindergarten

- TK and Kindergarten are not mandatory in California
- TK age students with IEPs indicating only speech and language therapy who do not attend TK can receive speech therapy through their IEP.
- TK age students with IEPs indicating specialized academic instruction services will be offered those services in a TK program not a preschool program.
- Kindergarten age students with IEPs indicating only speech and language therapy who do not attend Kindergarten can receive therapy through an Individual Service Plan (ISP) at their home school.
- Kindergarten age students with IEPs indicating specialized academic instruction cannot receive this service through an Individual Service Plan (ISP)



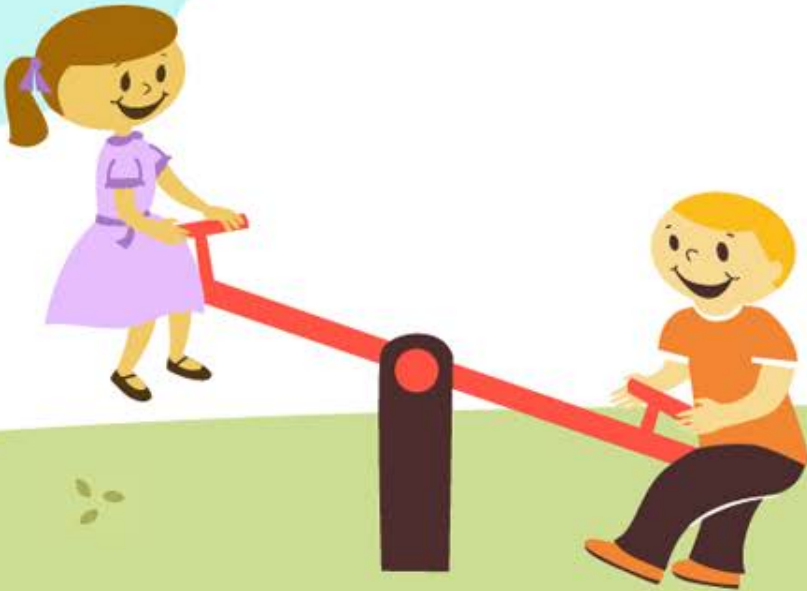
Do I Need to Register?

- Glankler students are already enrolled in Fremont Unified School District
- All families with Transitional Kindergarten and Kindergarten students must complete a “reservation form” and provide proof of residency at their home school
- You will receive a “Reservation Form” in the mail prior to February 13, 2017
- Please return to your “home school” no later than February 28, 2017 at 3:30 pm.



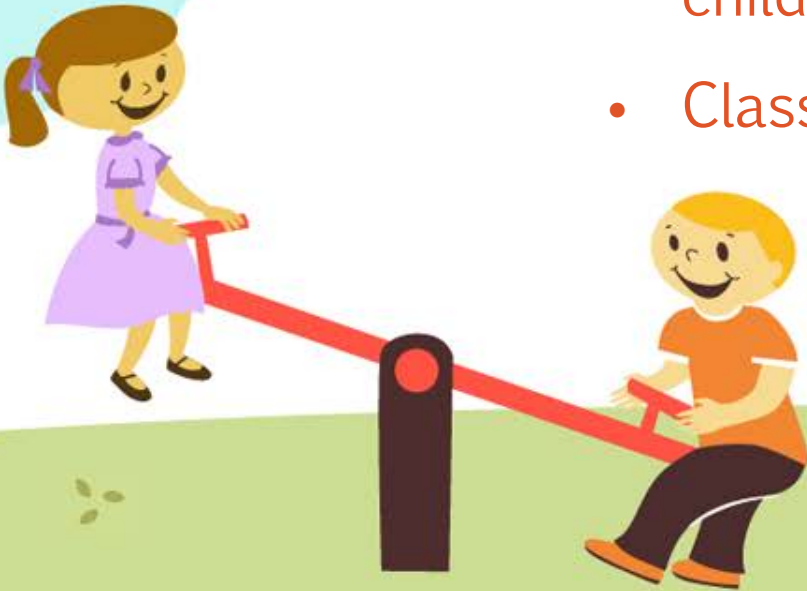
Where will my child go to TK or Kindergarten?

- Fremont Unified School District offers a continuum of special education programs and services
- Your child's IEP team will work together with you to develop a transition IEP
- Your child may attend your home school or another school in the district with the appropriate program and services



Programs vs. Classes

- The goal of special education is to give the child enough support to access the curriculum without giving too much support which may hinder growth
- “Programs” are defined by the level of support the child needs to access the curriculum
- Classes are the physical location of the program



FUSD Continuum of Programs and Services

- General Education
- General with Resource and/or Speech Therapy
- Mild/Moderate Special Day Class
- Moderate Special Day Class
- Moderate/Severe Special Day Class
- Intensive Instruction Special Day Class



Resource Specialist Program (RSP)

- Every elementary school has a Resource Specialist
- General Education for majority of the day
- Grade level/Standards based support with some accommodations
- Caseload of 28 students maximum
- One para educator
- Smarter Balanced Assessment (Beginning in Third Grade)



Mild/Moderate Special Day Class

- Located at various elementary schools throughout the district
- Grade level/Standards based curriculum with accommodations (some supplemental materials and modifications* as appropriate)
- 12-15 students
- Mainly large group and some small group instruction
- 1 para educator
- Mainstreaming as appropriate per IEPs
- Smarter Balanced Assessment (Beginning in Third Grade)



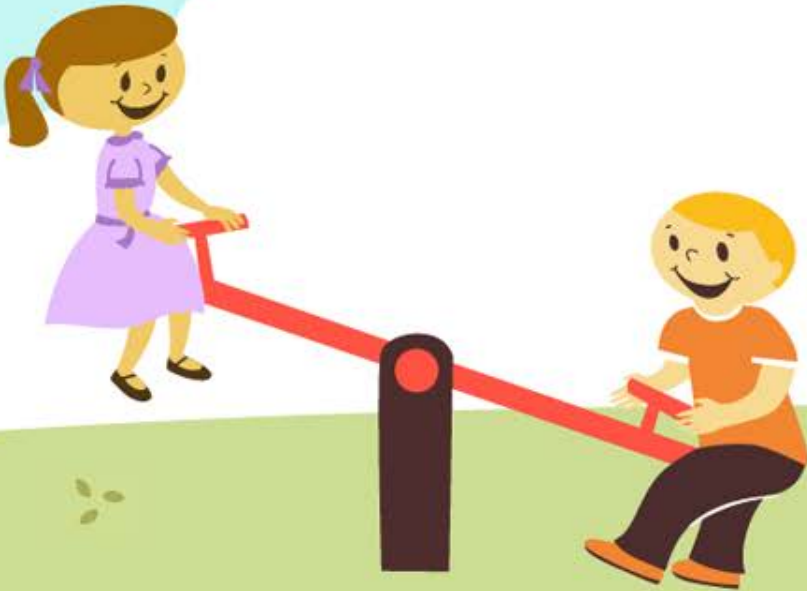
Moderate Special Day Class

- Located at various elementary schools throughout the district
- Below grade level
- Modified standards based curriculum, functional academics and life skills (includes slower pacing, repetition and modified content)
- Small group instruction with some large group instruction
- Mainstreaming as appropriate per student's IEP
- 12-15 students
- 2 para educators
- California Alternative Assessment (CAA) Beginning in Third Grade



Moderate/Severe Special Day Class

- Functional academics, life skills, language-based instruction
- Mainstreaming as appropriate per student's IEP
- 8-10 students
- 2-3 para educators
- California Alternative Assessment (Beginning in Third Grade)



Intensive Instruction Special Day Class

- Functional academics, language and behaviorally based, highly structured
- Individualized and Small Group Instruction
- Mainstreaming as appropriate per student's IEP
- 8-10 students
- 3 para educators
- California Alternative Assessment (Beginning in Third Grade)



How do we get there?

- Transitioning to TK/Kindergarten is a collaborative process
- A Transition IEP is held
- The IEP team considers the goals and objectives and recommends the appropriate services needed for the child to access the curriculum
- Parents will be invited to attend an Open House
- Remember that IEPs are reviewed annually



Services....Programs....Placements

- Special Education is a service not a place
- Services are based on the goals of the child
- Placement is where the appropriate services can be provided for the child



How are class placements made?

The determination of the school and a specific classroom are made by the Special Education Department based on :

- The child's IEP
- Location of the school closest to the child's home with the appropriate program
- Space in that class



When are class placements made?

- The special education department begins to project placements for over 4000 students in the spring with recommendations from each child's IEP team
- Class placements are finalized in June and provided to Glankler staff
- Glankler will notify parents of the proposed class placements via mail by June, 2017 Class placements are subject to change



Questions???

